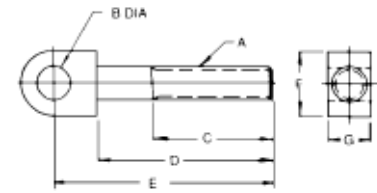


Swing Bolts

- ▶ Available in case hardened black oxide finish steel or stainless steel
- ▶ Precision machined from bar stock
- ▶ Swing bolts are not recommended for lifting applications

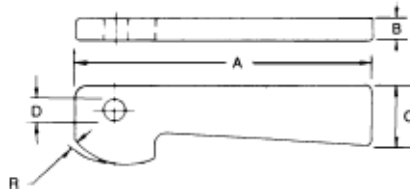


Low Carbon Steel PART #	Stainless Steel PART #	Thread	A	B	C	D	E	F	G
SWB-01	SWB-01SS	1/4-20	1/4	3/4	1-3/16	1-1/2	1/2	5/16	
SWB-02	SWB-02SS	1/4-20	1/4	1-1/4	2-3/16	2-1/2	1/2	5/16	
SWB-03	SWB-03SS	5/16-18	5/16	1	1-5/8	2	5/8	3/8	
SWB-04	SWB-04SS	5/16-18	5/16	1-3/8	2-5/8	3	5/8	3/8	
SWB-1	SWB-1SS	3/8-16	3/8	1-3/8	2	2-1/2	3/4	1/2	
SWB-10	SWB-10SS	3/8-16	3/8	2	3	3-1/2	3/4	1/2	
SWB-2	SWB-2SS	1/2-13	1/2	1-5/8	2-1/2	3-1/8	1	5/8	
SWB-20	SWB-20SS	1/2-13	1/2	2-1/2	3-1/2	4-1/8	1	5/8	
SWB-3	SWB-3SS	5/8-11	5/8	1-5/8	2-3/4	3-1/2	1-1/4	3/4	
SWB-30	SWB-30SS	5/8-11	5/8	2-1/2	4	4-3/4	1-1/4	3/4	



Single Cams

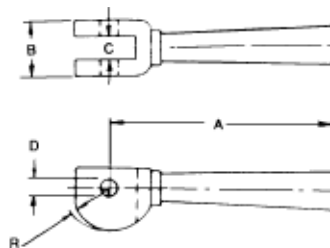
- ▶ Precision machined from carbon steel
- ▶ Case hardened, black oxide finish
- ▶ Used in clamping assemblies



PART #	A	B	C	D	R Rise
SC-0	2-3/8	3/16	1/2	5/32	1/16
SC-15	3-1/4	1/4	11/16	1/4	5/64
SC-1	4-1/2	3/8	7/8	5/16	7/64
SC-2	5	1/2	7/8	3/8	9/64

Double Cams

- ▶ Machined from carbon steel
- ▶ Case hardened
- ▶ Black oxide finish
- ▶ Used in clamping assemblies



PART #	A	B	C	D	R Rise
DC-0	2-11/16	9/16	1/4	3/16	1/16
DC-00	3-7/16	5/8	5/16	1/4	5/64
DC-1	4-15/16	1-1/8	1/2	3/8	7/64
DC-2	5-3/16	1-1/4	5/8	5/8	9/64